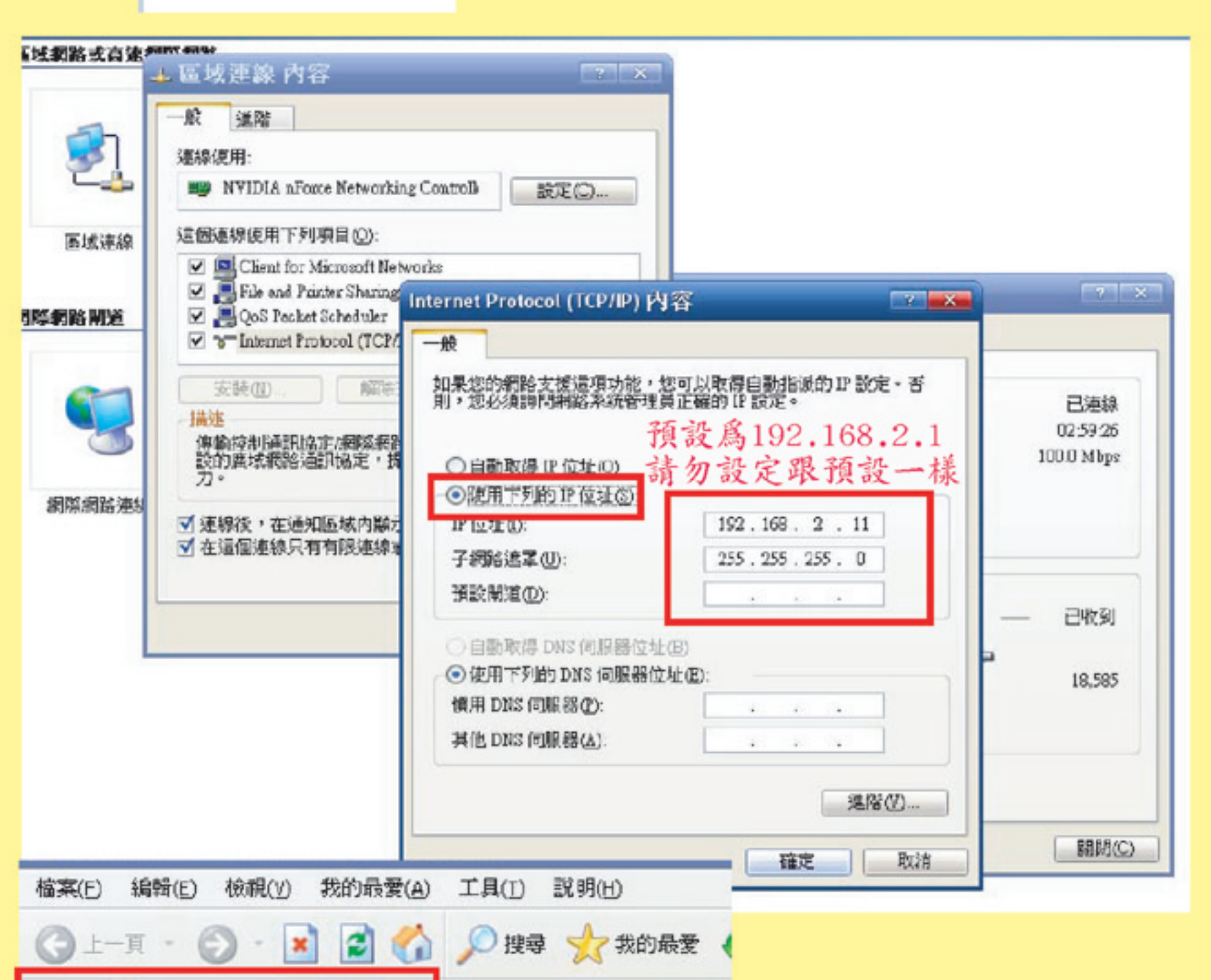
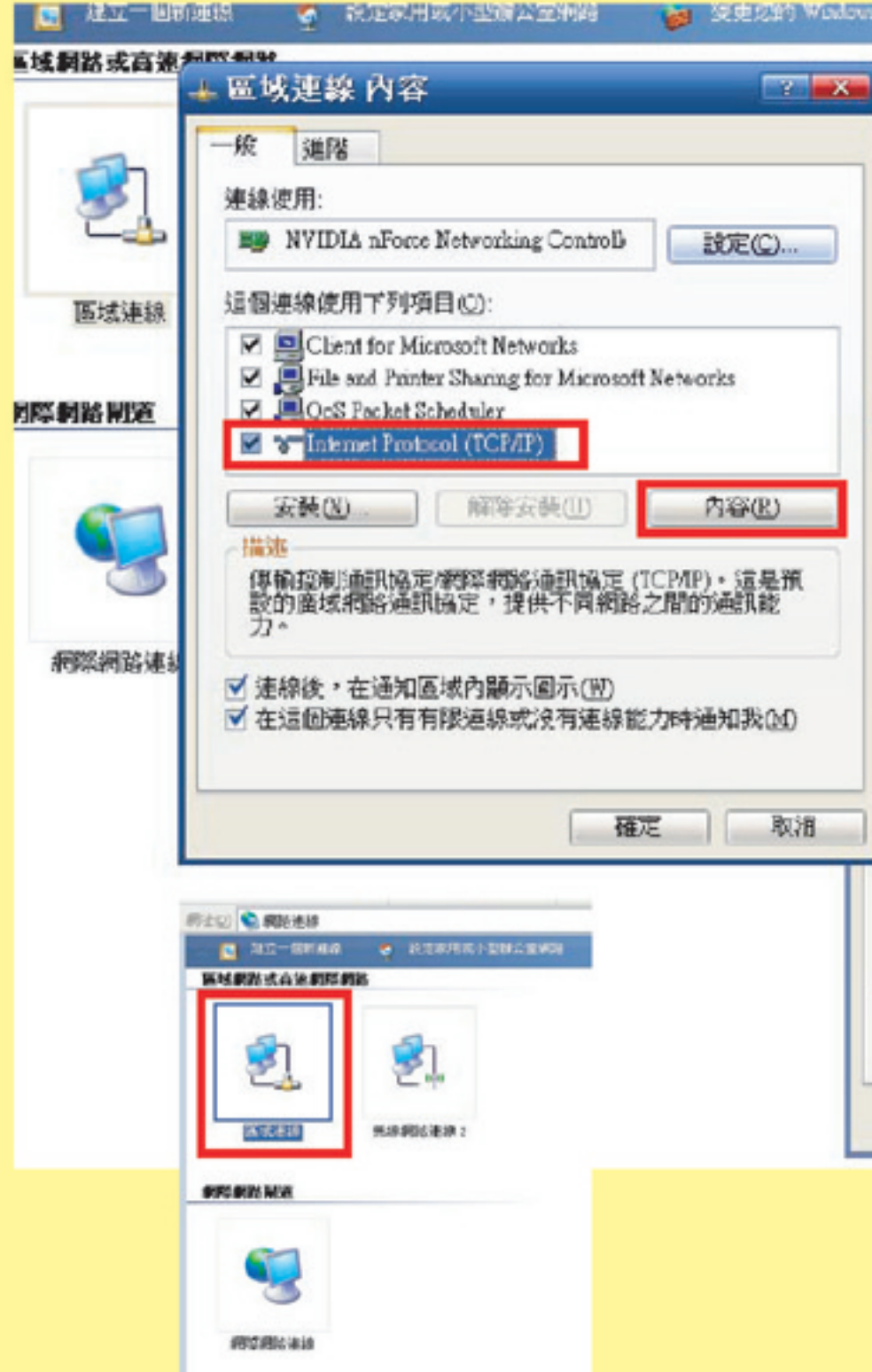


AP橋接器設定方式—中繼模式



網址 http://192.168.2.1/ 輸入192.168.2.1



- Home
- Basic Setting
- Advanced Setting
- Security
- MAC Filtering
- System Utility
- Configuration Tool
- Upgrade
- Reset

Status and Information

You can use the information to monitor the Access Point's MAC address, runtime code and hardware version.

System	
Uptime	0day:0h:26m:55s
Hardware Version	Rev. A
Runtime Code Version	1.22
Wireless Configuration	
Mode	AP Bridge-Point to Point
ESSID	default
Channel Number	11
Security	Disable
BSSID	00:0e:2e:ad:3a:ee
LAN Configuration	
IP Address	192.168.2.1
Subnet Mask	255.255.255.0
Default Gateway	0.0.0.0
MAC Address	00:0e:2e:ad:3a:ee

MAC位址共10位數字

- Home
- Basic Setting
- Advanced Setting
- Security
- MAC Filtering
- System Utility
- Configuration Tool
- Upgrade
- Reset

System Utility

Enter the IP Address of the Access Point. If you want to use DHCP server service, you should enter a unique IP for the Access Point.

Password Settings

Current Password:
 New Password:
 Re-Enter Password:

Management IP

IP Address: 192.168.2.1
 Subnet Mask: 255.255.255.0
 Gateway Address: 0.0.0.0
 DHCP Server: Disabled

DHCP Server

Default Gateway IP: 0.0.0.0
 Domain Name Server IP: 0.0.0.0
 Start IP: 192.168.2.100
 End IP: 192.168.2.200
 Domain Name:
 Lease Time: 10mins

Apply Cancel

預設IP位址請自行更改,但是要記下來,有兩台以上的橋接器請設定為不一樣的位址。

- Home
- Basic Setting
- Advanced Setting
- Security
- MAC Filtering
- System Utility
- Configuration Tool
- Upgrade
- Reset

Mode: Universal Repeater
 Band: 2.4 GHz (B+G)
 ESSID: default
 Channel Number: 11
 Associated Clients: Show Active Clients
 WLAN MAC: 000000000000
 Root AP SSID:

先存檔 Apply Cancel

選擇中繼模式
 不做設定

Mode: Universal Repeater
 Band: 2.4 GHz (B+G)
 ESSID: default
 Channel Number: 11
 Associated Clients: Show Active Clients
 WLAN MAC: 000000000000
 Root AP SSID:
 Site Survey: Select Site Survey

存檔 Apply Cancel

搜尋想橋接的訊號後加入就會在此自動產生資料
 搜尋可用網路做橋接中繼

Wireless Site Survey

This page provides tool to scan the wireless network. If any Access Point or IBSS is found, you could choose to connect it manually when client mode is enabled.

SSID	BSSID	Channel	Type	Encrypt	Signal	Select
rfcastle	00:0e:2e:43:6f:07	6 (B+G)	AP	WEP	83	<input type="radio"/>

Refresh Done Close

在此會顯示想要做中繼橋接的SSID訊號,這個模式是要把無線的訊號延伸,為無線轉無線。