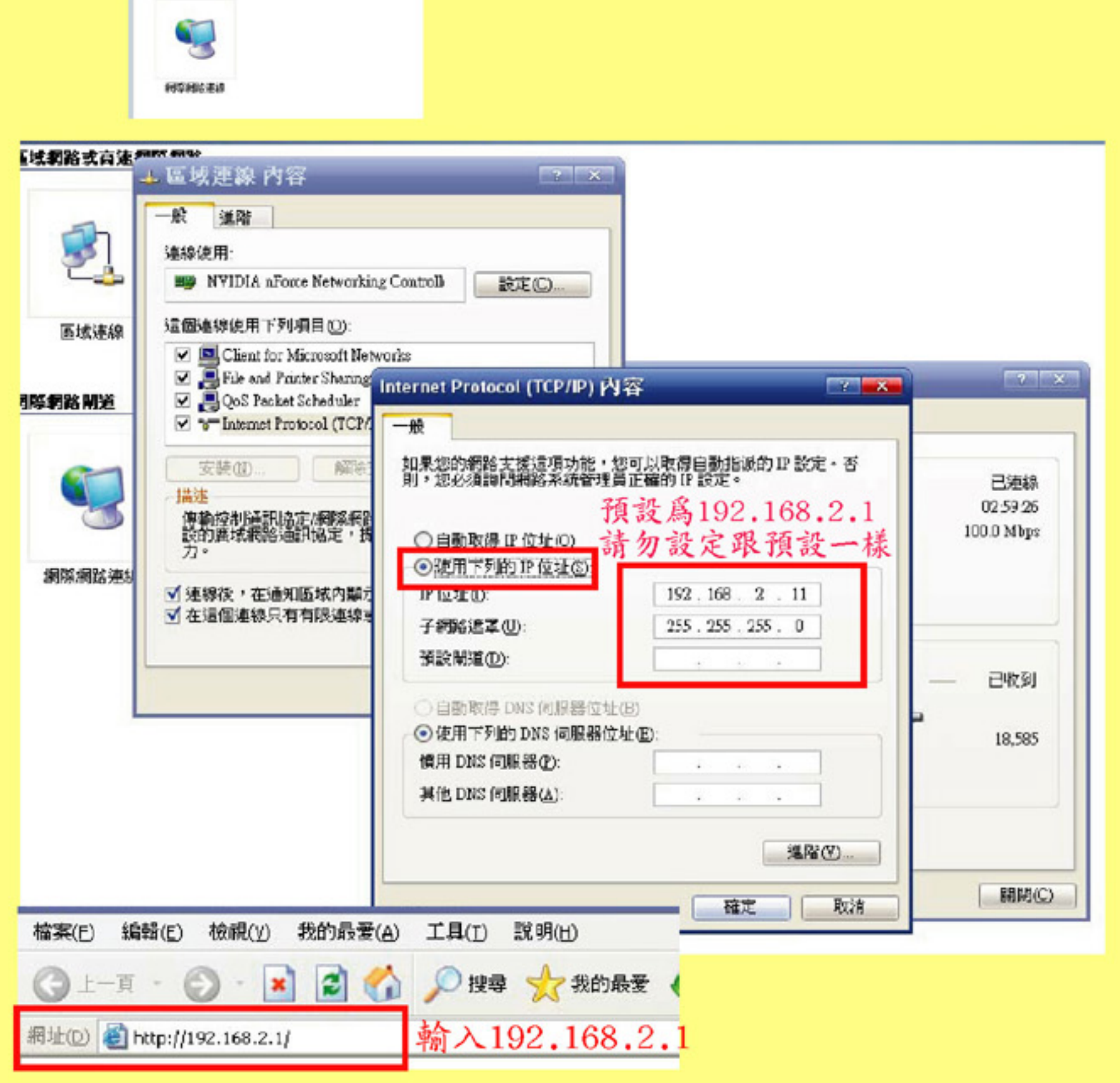
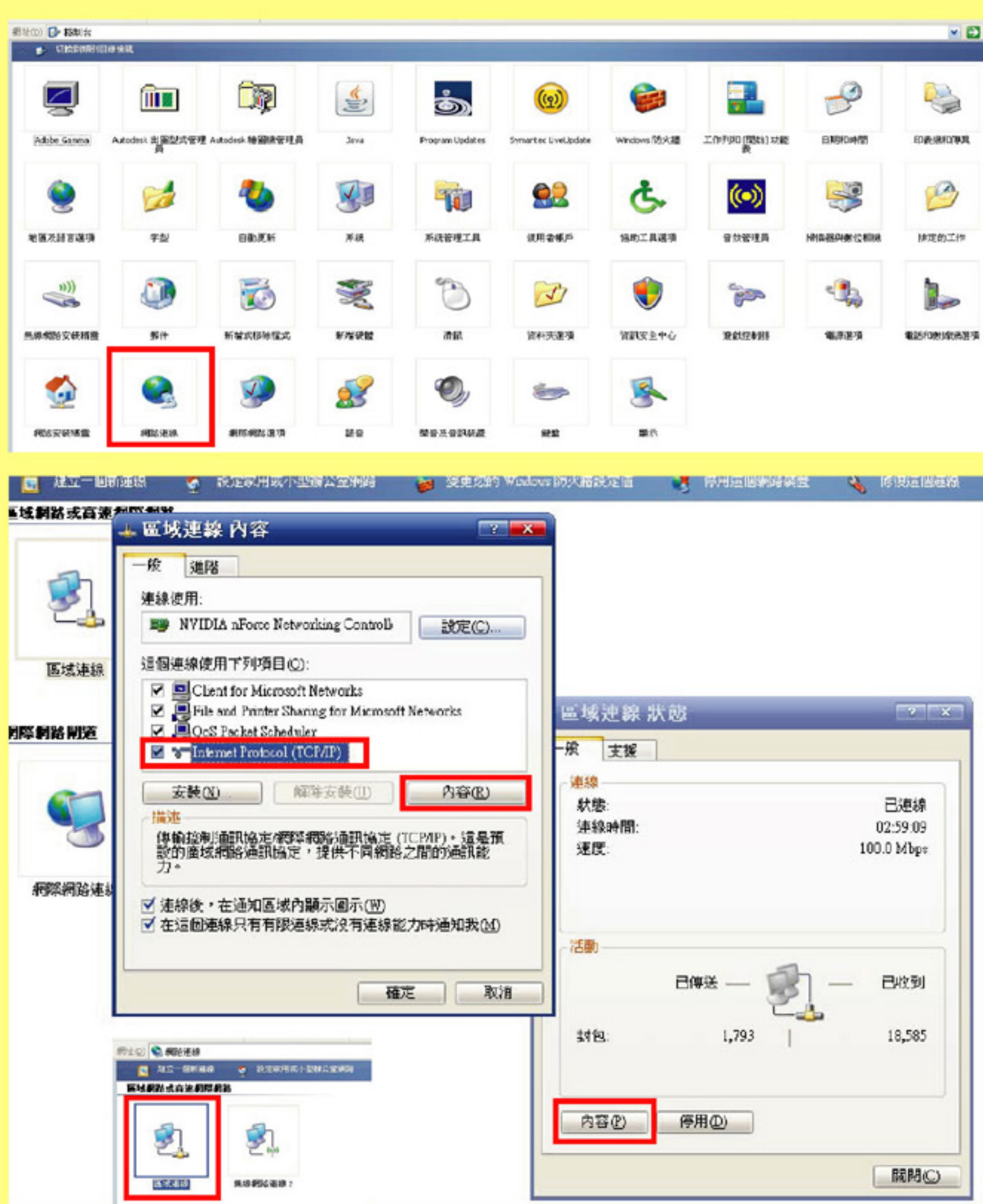


AP橋接器設定方式－網卡模式



- Home
- Basic Setting
- Advanced Setting
- Security
- MAC Filtering
- System Utility
- Configuration Tool
- Upgrade
- Reset

Status and Information

You can use the information to monitor the Access Point's MAC address, runtime code and hardware version.

System	
Uptime	0day:0h:26m:55s
Hardware Version	Rev. A
Runtime Code Version	1.22
Wireless Configuration	
Mode	AP Bridge-Point to Point
ESSID	default
Channel Number	11
Security	Disable
ESSID	00:0e:2e:ad:3a:ee MAC位址共10位數字
LAN Configuration	
IP Address	192.168.2.1
Subnet Mask	255.255.255.0
Default Gateway	0.0.0.0
MAC Address	00:0e:2e:ad:3a:ee

- Home
- Basic Setting
- Advanced Setting
- Security
- MAC Filtering
- System Utility
- Configuration Tool
- Upgrade
- Reset

System Utility

Enter the IP Address of the Access Point. If you want to use DHCP server service, you should enter a unique IP for the Access Point.

Password Settings

Current Password:
 New Password:
 Re-Enter Password:

Management IP

IP Address: **預設IP位址請自行更改,但是要記下來,有兩台以上的橋接器請設定為不一樣的位址.**
 Subnet Mask:
 Gateway Address:
 DHCP Server:

DHCP Server

Default Gateway IP:
 Domain Name Server IP:
 Start IP:
 End IP:
 Domain Name:
 Lease Time:

Apply Cancel

- Home
- Basic Setting
- Advanced Setting
- Security
- MAC Filtering
- System Utility
- Configuration Tool
- Upgrade
- Reset

Advanced Settings

These settings are only for more technically advanced users who have a sufficient knowledge about wireless LAN. These settings should not be changed unless you know what effect the changes will have on your Broadband router.

打開鎖匙 分享鎖匙 自動

Authentication Type: Open System Shared Key Auto
 Fragment Threshold: (256-2346)
 RTS Threshold: (0-2347)
 Beacon Interval: (20-1024 ms)
 Data Rate:
 Preamble Type: Long Preamble Short Preamble
 Broadcast ESSID: Enabled Disabled
 IAPP: Enabled Disabled
 802.11g Protection: Enabled Disabled
 Fast Roaming Threshold: (10-90)

Apply Cancel

- Home
- Basic Setting
- Advanced Setting
- Security
- MAC Filtering
- System Utility
- Configuration Tool
- Upgrade
- Reset

Security

This page allows you setup the wireless security. Turn on WEP or WPA by using Encryption Keys could prevent any unauthorized access to your wireless network.

Encryption: **設定加密**
 Key Length:
 Key Format:
 Default Tx Key:
 Encryption Key 1:
 Encryption Key 2:
 Encryption Key 3:
 Encryption Key 4:
 Enable 802.1x Authentication

Apply Cancel

- Home
- Basic Setting
- Advanced Setting
- Security
- MAC Filtering
- System Utility
- Configuration Tool
- Upgrade
- Reset

Wireless Setting

This page allows you to define ESSID, and Channel for the wireless connection. These parameters are used for the wireless stations to connect to the Access Point.

Mode: **選擇網卡模式**
 Band:
 ESSID:
 WLAN MAC:

存檔 Apply Cancel

Wireless Setting

This page allows you to define ESSID, and Channel for the wireless connection. These parameters are used for the wireless stations to connect to the Access Point.

Mode:
 Band:
 ESSID:
 Site Survey: **搜尋可用的網路**
 WLAN MAC:

Apply Cancel



PS. 記得如果你搜尋的訊號有加密要記得在橋接器內要設定密碼喔, 上面有教學