

# 14dBi指向易天納天線CPEVII (5GHz EeeTenna™)



## Features

- **High Speed Data Rates**  
802.11an 300 Mbps
- **High Gain Directional Antenna**  
Built-in high-gain 14dBi directional antenna
- **Support Power over Ethernet**  
Passive 24V PoE supporte
- **Open Source Compatible**  
OpenWrt/LEDE supported
- **Hardware watchdog**  
Ensure operating properly
- **Weather-Proof design**  
IP rated IP67
- **ESD Protection**  
Enhanced ESD protection on both LAN and RF



LED+Reset PoE LAN

## Operation Mode

- AP mode
- Station mode
- WDS mode



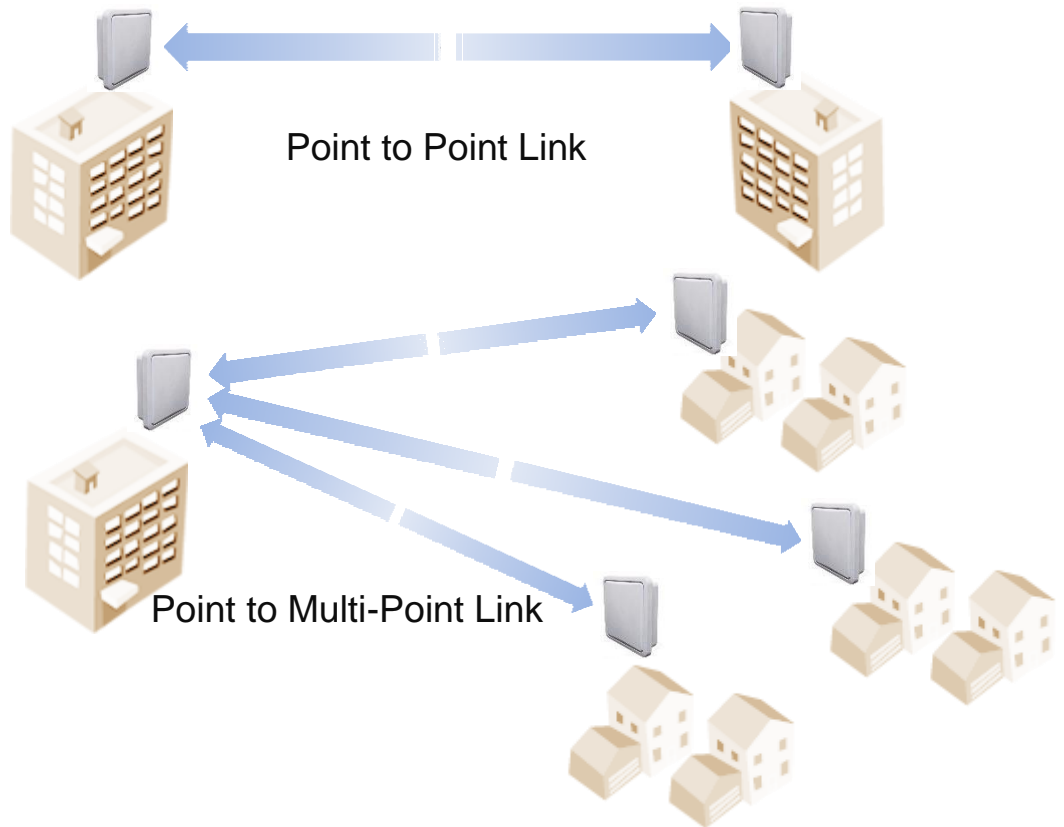
**WIFI-Link™ Technologies Inc.**

歲海尼可網路科技有限公司

WEB:<http://www.wifi-link.com.tw/> TEL:06-2523801 FAX:06-2526033

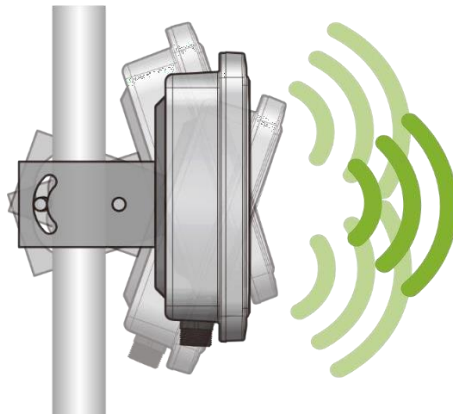
## Application Scenario

Easy to setup Point to Point link and Point to Multi-Point link



## Built-in High-Gain Antenna

Adjustable antenna angle mount for better connection



## Specifications

Chipset	AR9344
Standard	802.11an
Flash / RAM	16 MB/ 64 MB
Data Rate	Up to 300 Mbps
Channel Width	20/40 MHz (5/10 MHz will support in the future)
Interface	1x 10/100 Mbps RJ45: PoE In 1x 10/100 Mbps RJ45 1x LED + Reset
Antenna	Built-in 14dBi MIMO Panel Antenna
LED Indicator	Power, PoE LAN, WLAN
Waterproof IP rate	IP67
PoE	Passive 24V PoE
Operating Temperature	-40°C ~ 65°C
Operating Humidity	5% ~ 95% (Non-condensing)
Dimensions	230 x 230 x 75 mm
Weight	2000 g

## RF Specifications [ Tolerance $\pm 2$ dB ]

Data Rate	TX	RX
11an HT20/40 MCS7	22/22	-70/-67
11an HT20/40 MCS6	22/22	-71/-68
11an HT20/40 MCS5	24/24	-73/-70
11an HT20/40 MCS4	24/24	-78/-75
11an HT20/40 MCS3	26/26	-81/-78
11an HT20/40 MCS2	26/26	-86/-83
11an HT20/40 MCS1	26/26	-88/-85
11an HT20/40 MCS0	28/27	-91/-88
11a 54M	23	-73
11a 48M	24	-74
11a 36M	26	-79
11a 24M	28	-83
11a 18M	28	-86
11a 12M	28	-89
11a 9M	28	-90
11a 6M	28	-92