

14dBi指向易天納天線CPEVI (2.4GHz EeeTenna™)



2.4 GHz High-Speed
Support 802.11n MIMO Data-rate up to 300 Mbps



High-Gain Antenna
Built-in 14 dBi High-gain directional MIMO antenna



Passive PoE
Support market common 24V PoE



USB Port
Support micro USB port, for future upgrade to 4G connection, Web Camera surveillance and GPS location or other USB application



Waterproof Design
Outdoor IP66 design to protect from dust, oil and water



Quality Link
Adjustable Antenna angel design for better connection



LED/Reset Button

PoE Output

PoE Input

Micro USB



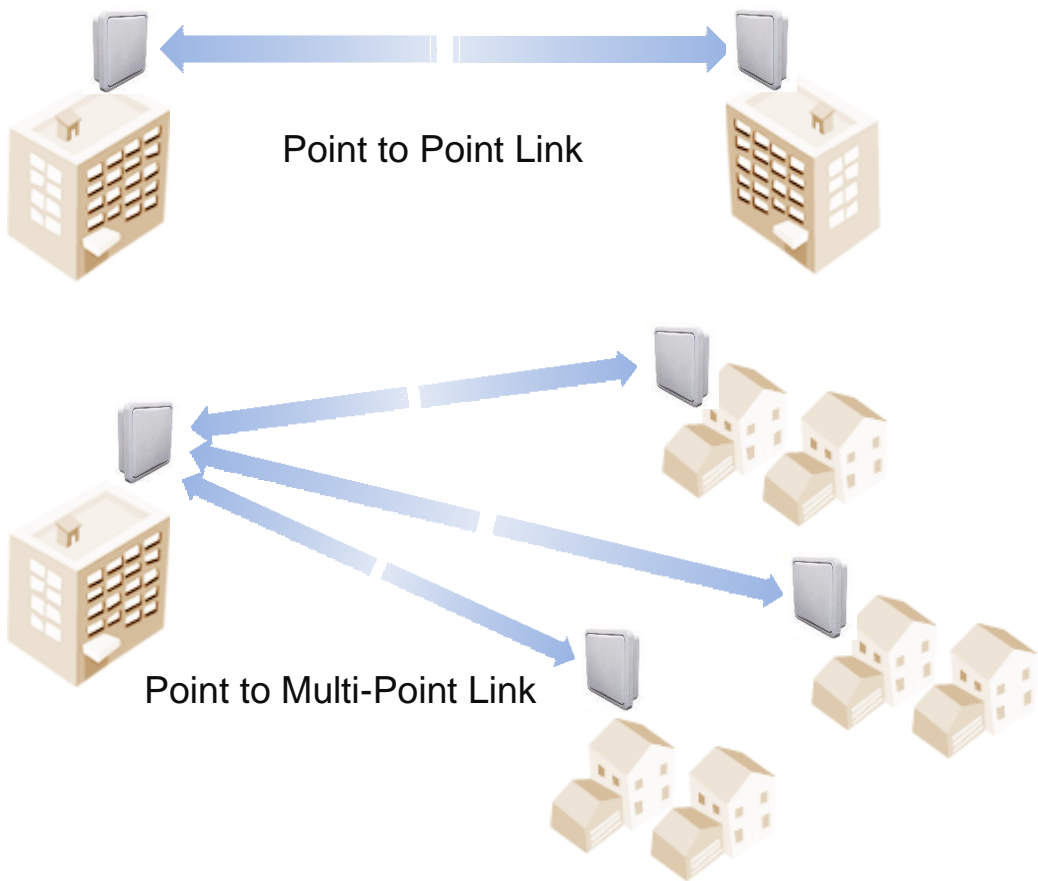
WIFI-Link™ Technologies Inc.

歲海尼可網路科技有限公司

WEB:<http://www.wifi-link.com.tw/> TEL:06-2523801 FAX:06-2526033

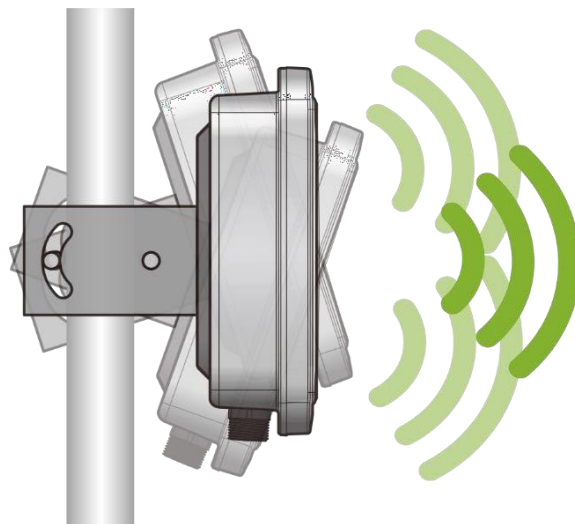
Application Scenario

Easy to setup Point to Point link and Point to Multi-Point link



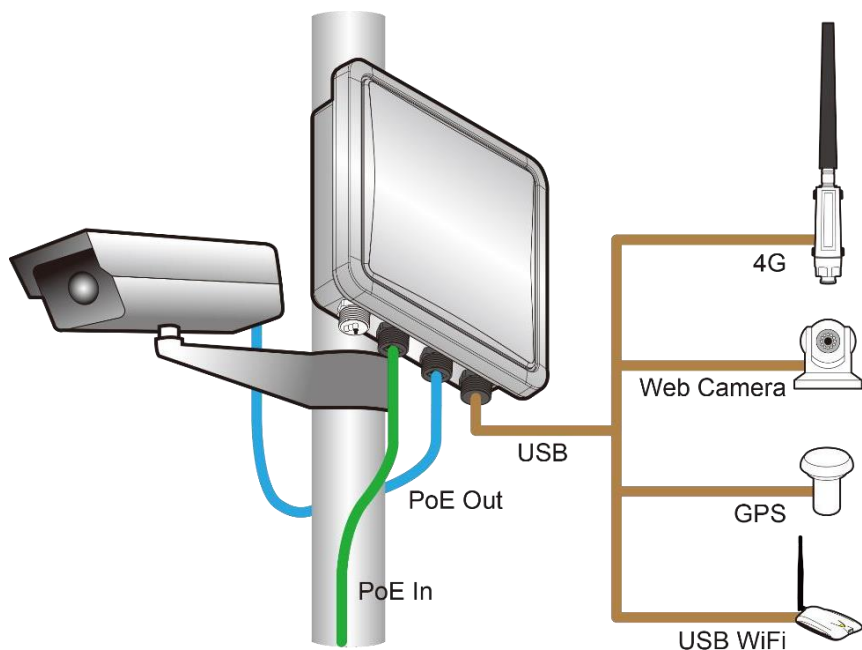
Antenna Adjustable

Adjustable antenna angle mount for better connection



Interface Setup Scenario

Scalability to any application with PoE Out and USB port



Specifications

Chipset	QCA9531
Standard	802.11 b/g/n
Flash/RAM	16MB/128MB
Data Rate	Up to 300Mbps
Interface	1x 10/100 Mbps RJ45: PoE In 1x 10/100 Mbps RJ45: PoE Out 1x MicroUSB
Antenna	Built-in 14dBi Panel Antenna
LED Indicator	Power, PoE Out, WLAN
Waterproof IP rate	IP66
Power Method	24V Passive PoE (Pairs 4,5+; 7,8 -)
Operating Temperature	-40°C ~ 65°C
Operating Humidity	5% ~ 95% (Non-condensing)
Dimensions	230 x 230 x 75 mm
Weight	2000 g
Software Feature	Mode: AP Bridge/Client Bridge/ WDS Bridge PoE output control by software